

Large Ink Jet Printer

SC-F500 Series

Operator's Guide

This guide contains selected information on how to use the printer and frequently used features of the printer. See the User's Guide (online manual) for detailed instructions on using the printer.


Home Screen Operations	2
Getting Ready to Print	4
Basic Printing (Windows).....	6
Basic Printing (Mac)	8

Home Screen Operations

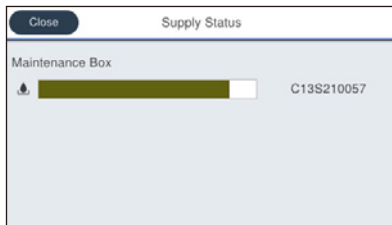
The home screen is displayed when the printer is turned on. These pages show the available operations on the home screen.

The estimate of the amount of free space remaining in the maintenance box.

The shorter the bar, the less free space there is in the maintenance box.


When  is displayed, prepare a new maintenance box. You can continue printing until replacement is required.

 **Touch this icon...**



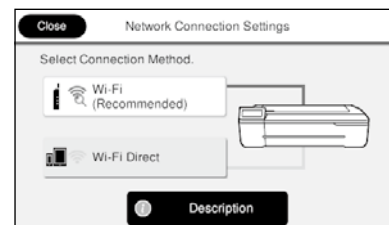
You can see the consumable product numbers.

The network connection status

The icon changes according to the connection method. While the printer is connected,  is blue and indicates the signal strength.




 **Touch this icon...**

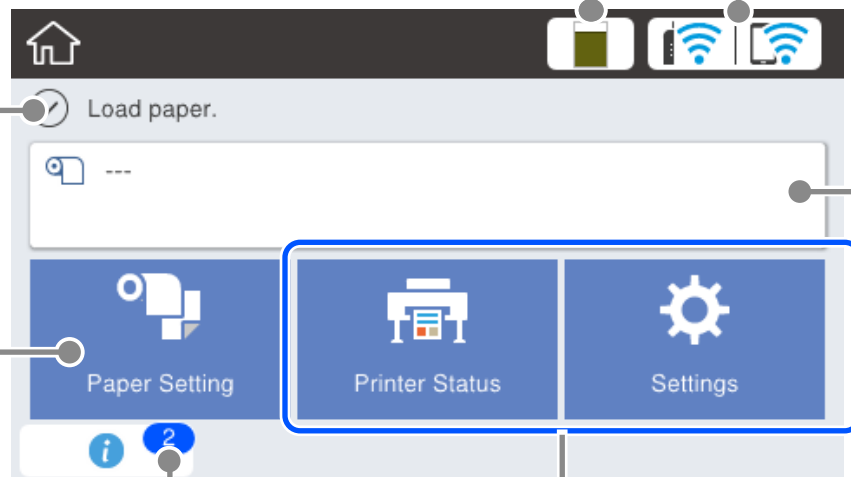


You can change the connection method.

The current printer status

Touch to load or remove paper.

 "Getting Ready to Print" on page 4



Touch to check the printer status or change the printer settings.

Roll paper information

The paper type and roll paper width that have been set are displayed.



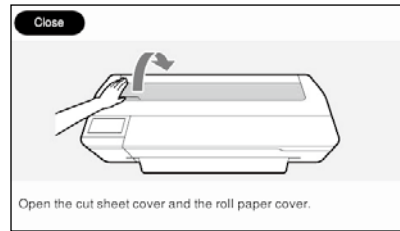
Touch after loading roll paper...



You can perform actions such as replacing roll paper.



Touch before loading roll paper...



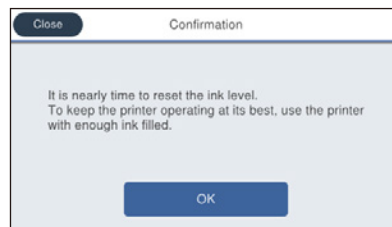
Instructions on how to load roll paper are displayed.

The number of notices.

The number of notices, such as ink low warnings, is displayed on the icon.



Touch this icon...

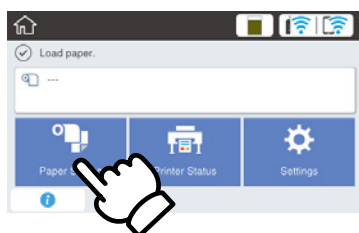


A list of the notices that require your action is displayed. You can see instructions on what to do when you touch each notice.

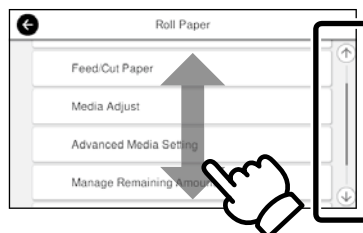
When you complete the actions for all the notices, the number disappears from the icon.

Touch Panel Operations

Touch (tap)



Slide



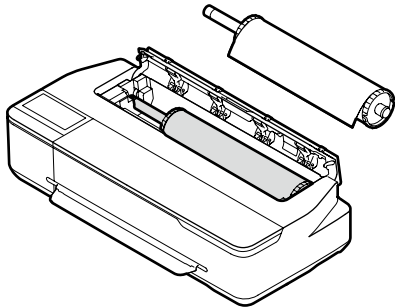
The scroll bar is displayed when you can scroll up and down.

Getting Ready to Print

These pages explain how to get the printer ready for printing. Carefully follow these steps to get optimum print quality.

Check the Paper Loading Positions

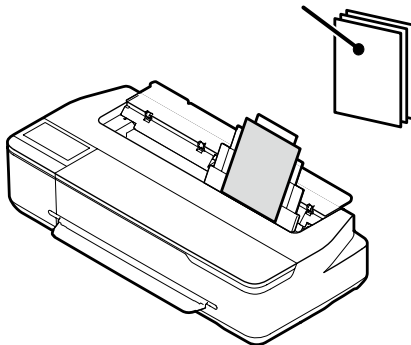
Roll Paper



Auto Sheet Feeder

A4 to A3

Multiple sheets can be set at a time*

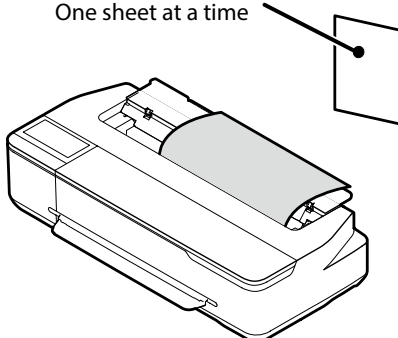


*The number of sheets loaded at one time varies according to the paper type. See the User's Guide (online manual) for more information.

Cut Sheet (1 sheet)

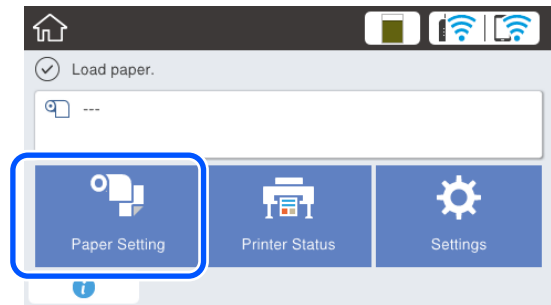
A4 to 610 mm (24 inches)

One sheet at a time

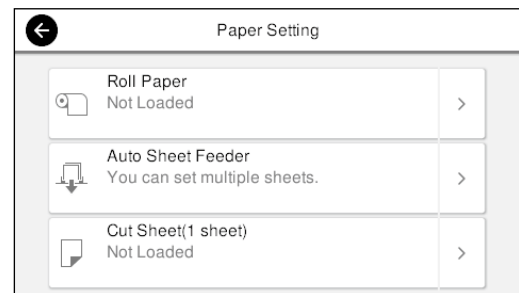


Load the Paper Following the On-Screen Instructions

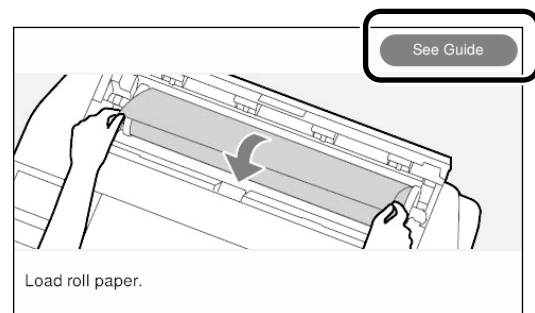
1 Touch Paper Setting.



2 Select one of the paper sources.



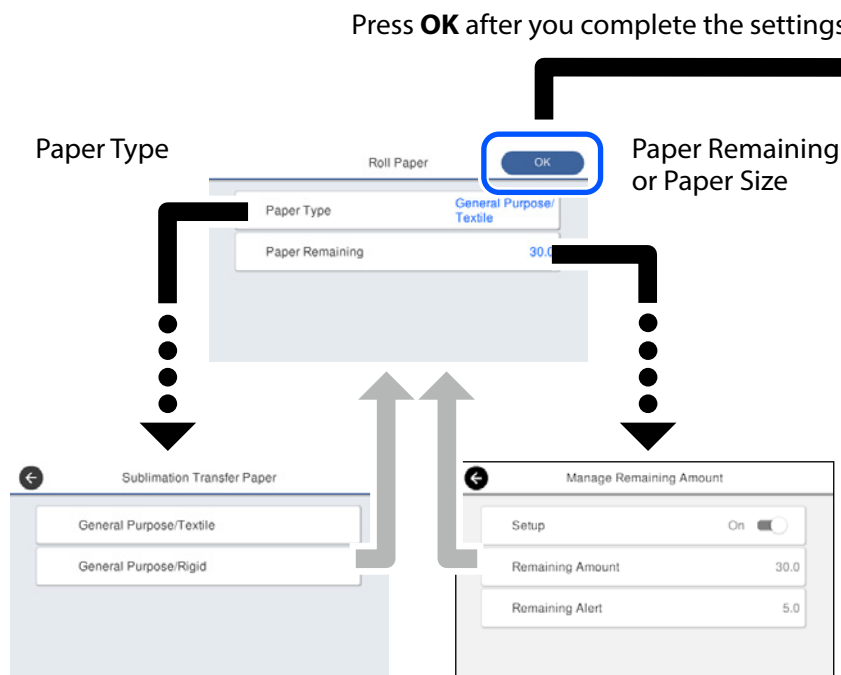
3 Touch See Guide to see the detailed on-screen instructions.



When Load paper or Ready is displayed on the home screen, you can open the cut sheet cover and load a cut sheet into the printer. However, after loading a cut sheet, make sure you select Cut Sheet (1 sheet) in step 2. Otherwise, the printer cannot detect the loaded cut sheet.

Set the Paper Type and Paper Size

The setting items vary according to the paper.
If you select a paper type or size that does not match the loaded paper, the printout will have creases, ink smudges, or banding.



Promptly select the settings because the paper will start being fed if the screen is not used for 90 seconds.

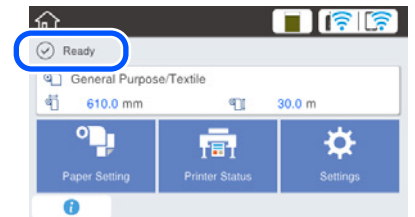
Selecting the paper type

Select between two types of paper depending on what you want to print.

- General Purpose/Textile: Select when printing to fabric.
- General Purpose/Rigid: Select when printing on hard material such as cups, key rings, coasters, and so on.

Print

When **Ready** is displayed, you can start printing.



You can load roll paper and then load cut sheets on the auto sheet feeder. The printer driver allows you to select either of these two paper sources.

Basic Printing (Windows)

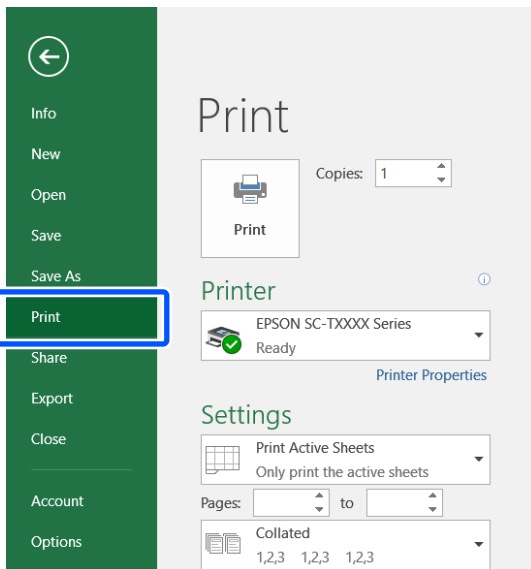
This section explains basic printing methods using the Windows printer driver.

Printing Procedure

1 Load the paper you want to print on.

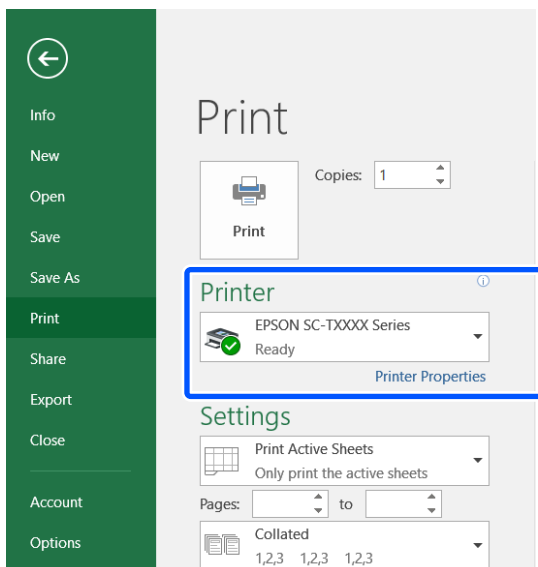
☞ "Getting Ready to Print" on page 4

2 After creating data in the application, click the File menu, and then click Print.

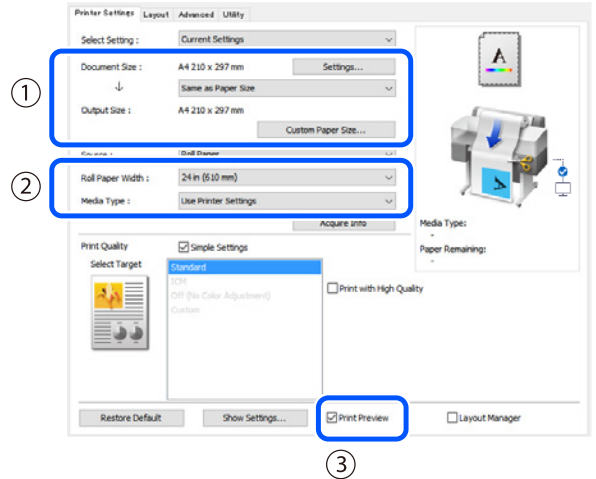


3 Select the printer in Printer, and then click Printer Properties.

The printer driver screen is displayed.



4 Check the following displayed content.



1. Document size/Output size

Content set in the application is displayed automatically in the Document size.

To reduce or enlarge, select the Output size from the pull-down menu below the Document size.

2. Roll Paper Width/Media Type

Settings made on the printer's control panel are displayed automatically.

If you load or change paper after opening the Printer Settings screen, click the **Acquire Info** button to update the settings.

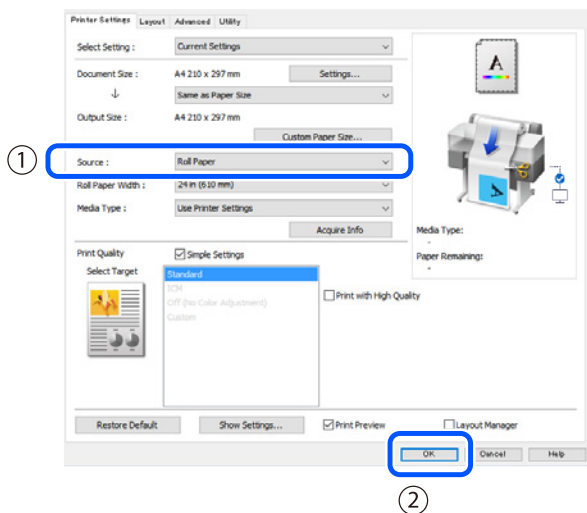
3. Print Preview

Make sure this is selected.

5

Select Paper Source, and then click OK.

Select from roll paper, auto sheet feeder, and cut sheet.



Even if nothing is set in the printer driver, the print data is reversed (mirrored) and printed. Printing is not reversed if you clear the **Mirror Image** check box.

6

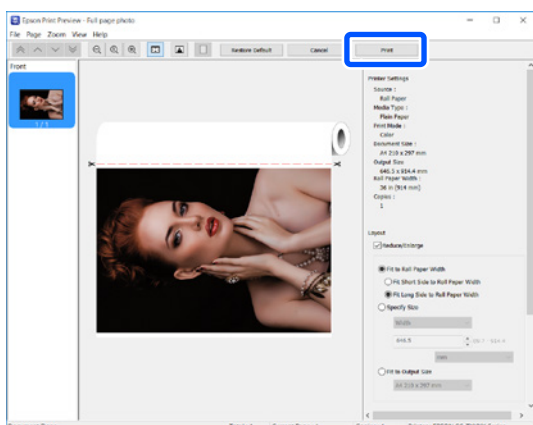
Click Print on the print screen of the application.

The print preview screen is displayed.

7

Check the settings, and then click Print.

Printing starts.

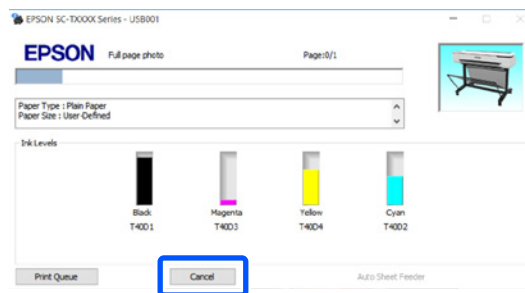


Canceling Printing

Follow the steps below depending on your circumstances.

When the following screen is displayed

Click **Cancel**.



When data is being transferred from the computer to the printer

You cannot cancel printing from your computer. Cancel from the printer's control panel screen.

Basic Printing (Mac)

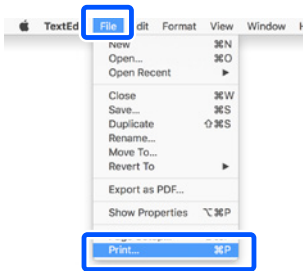
This section explains basic printing methods using the Mac printer driver.

Printing Procedure

1 Load the paper you want to print on.

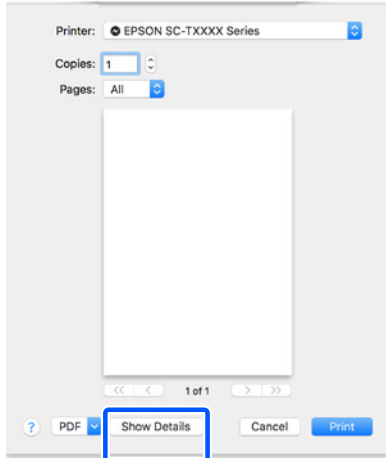
"Getting Ready to Print" on page 4

2 After creating data in the application, click Print from the File menu.

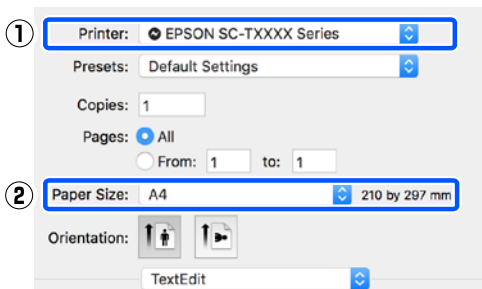


3 Click Show Details (or ▼) at the bottom of the screen.

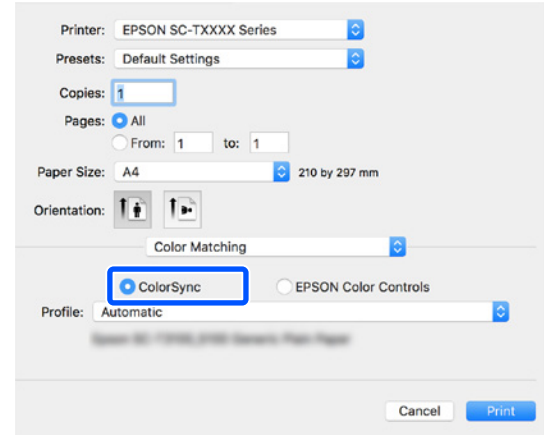
The printer driver screen is displayed.



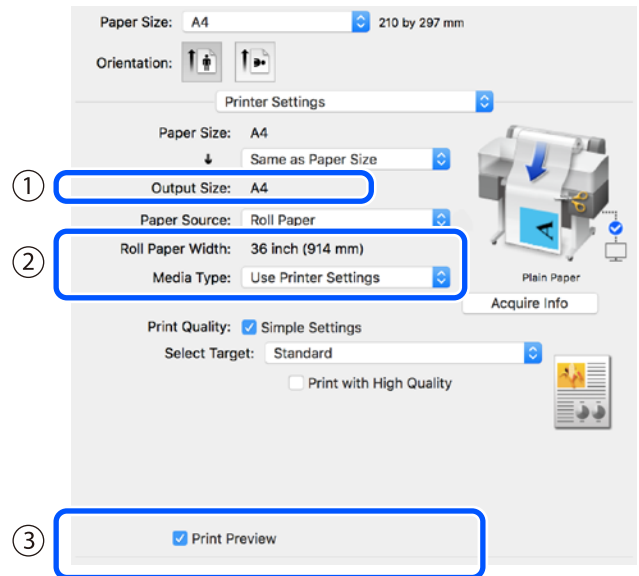
4 Make sure this printer is selected, and then set the paper size.



5 Select Color Matching, and then click ColorSync.



6 Select Printer Settings, and then check the following displayed content.



1. Output size

Content set in the application is displayed automatically in the Output size.

To reduce or enlarge, select the Output size from the pull-down menu below the Document size.

2. Roll Paper Width/Media Type

Settings made on the printer's control panel are displayed automatically.

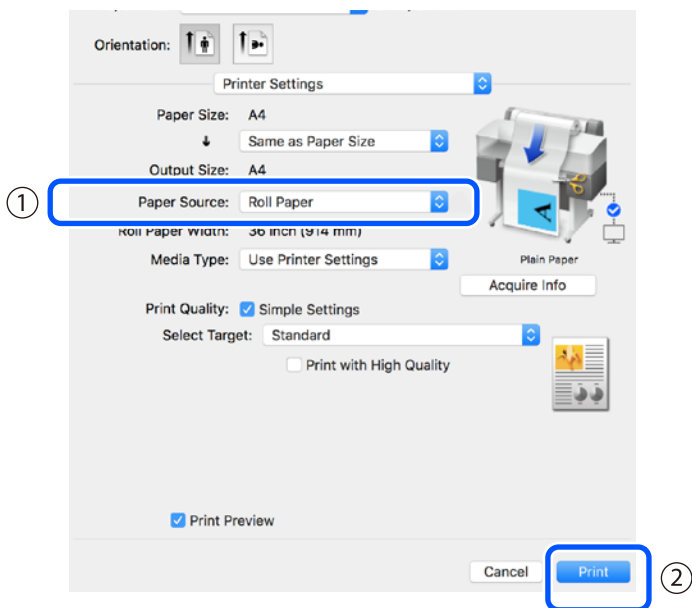
If you load or change paper after opening the Printer Settings screen, click the **Acquire Info** button to update the settings.

3. Print Preview

Make sure this is selected.

7 Select Paper Source, and then click Print.

Select from roll paper, auto sheet feeder, and cut sheet.



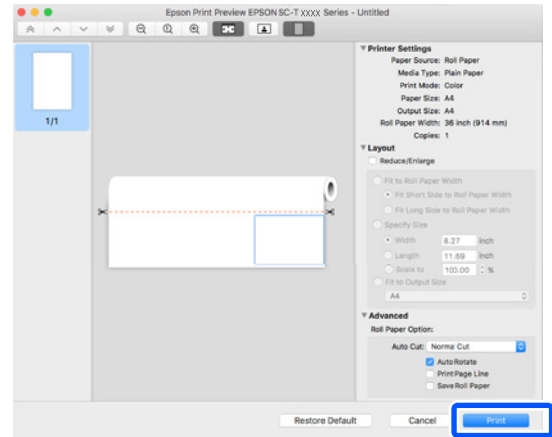
Even if nothing is set in the printer driver, the print data is reversed (mirrored) and printed. Printing is not reversed if you select the **Mirror Image** check box.

8 Click Print on the print screen of the application.

The print preview screen is displayed.

9 Check the settings, and then click Print.

Printing starts.

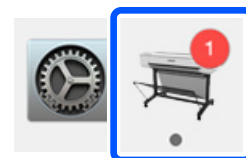


Canceling Printing

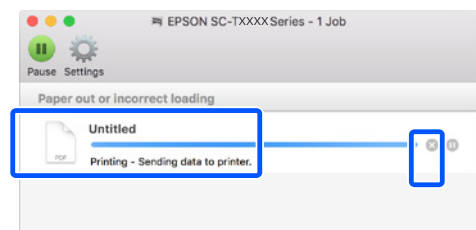
Follow the steps below depending on your circumstances.

When the printer's icon is displayed as follows in the Dock

1 Click on the printer's icon.



2 Click the print data that you want to cancel, and then click Delete.



When data is being transferred from the computer to the printer

You cannot cancel printing from your computer. Cancel from the printer's control panel screen.

MEMO

Copyrights and Trademarks

No Part of this publication may be reproduced, stored in a retrieval system, or transmitted in any form or by any means, electronic, mechanical, photocopying, recording, or otherwise, without the prior written permission of Seiko Epson Corporation. The information contained herein is designed only for use with this Epson printer. Epson is not responsible for any use of this information as applied to other printers.

Neither Seiko Epson Corporation nor its affiliates shall be liable to the purchaser of this product or third parties for damages, losses, costs, or expenses incurred by the purchaser or third parties as a result of accident, misuse, or abuse of this product or unauthorized modifications, repairs, or alterations to this product, or (excluding the U.S.) failure to strictly comply with Seiko Epson Corporation's operating and maintenance instructions.

Seiko Epson Corporation shall not be liable for any damages or problems arising from the use of any options or any consumable products other than those designated as Original Epson Products or Epson Approved Products by Seiko Epson Corporation.

Seiko Epson Corporation shall not be held liable for any damage resulting from electromagnetic interference that occurs from the use of any interface cables other than those designated as Epson Approved Products by Seiko Epson Corporation.

EPSON, EPSON EXCEED YOUR VISION, EXCEED YOUR VISION, and their logos are registered trademarks or trademarks of Seiko Epson Corporation.


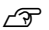
Microsoft®, Windows®, and Windows Vista® are registered trademarks of Microsoft Corporation.

Mac, macOS, OS X, Bonjour, and Safari are trademarks of Apple Inc., registered in the U.S. and other countries.

General Notice: Other product names used herein are for identification purposes only and may be trademarks of their respective owners. Epson disclaims any and all rights in those marks.

© 2019 Seiko Epson Corporation. All rights reserved.

Meaning of Symbols

 Important	Important must be followed to avoid damage to this product.
	Indicates related reference content.

Product Model Descriptions

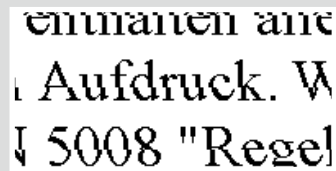
Some models described in this manual may not be sold in your country or region.

Troubleshooting Print Quality Problems

Horizontal or Vertical Lines



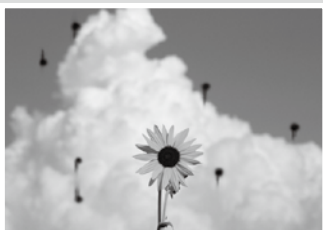
Double Ruled Lines or Warped Characters



Creases, Scuff marks, or Uneven colors



Ink Drops



Solutions

Perform the solutions in the following order until the printed results have improved.

Start by reloading the target paper.

Check the Paper Type Setting

Touch **Paper Setting** on the home screen and check the paper type setting. If the paper type setting is incorrect, touch the target paper source and change to the correct paper type.

For how to set the paper type, see below.

 "Getting Ready to Print" - "Set the Paper Type and Paper Size" on page 5



If the printed results did not improve

Perform Media Adjust

From the home screen, touch **Paper Setting** - target paper source - **Media Adjust**. Follow the on-screen instructions to complete the adjustment.



If the printed results did not improve

Check for Clogged Nozzles and Run Head Cleaning

From the home screen, touch **Settings - Maintenance - Print Head Nozzle Check**.

Follow the on-screen instructions to print and check the nozzle check pattern and to run head cleaning.



If the clogged nozzles did not improve after three times

Run Powerful Cleaning

From the home screen, touch **Settings - Maintenance - Powerful Cleaning**.

If the clogged nozzles still did not improve, contact your dealer or Epson Support.

Perform head cleaning.

From the home screen, touch **Settings - Maintenance - Print Head Cleaning**.